

# Property Data Sheet

Watermark Lofts

960 John Nolen Drive, Madison, WI 53713

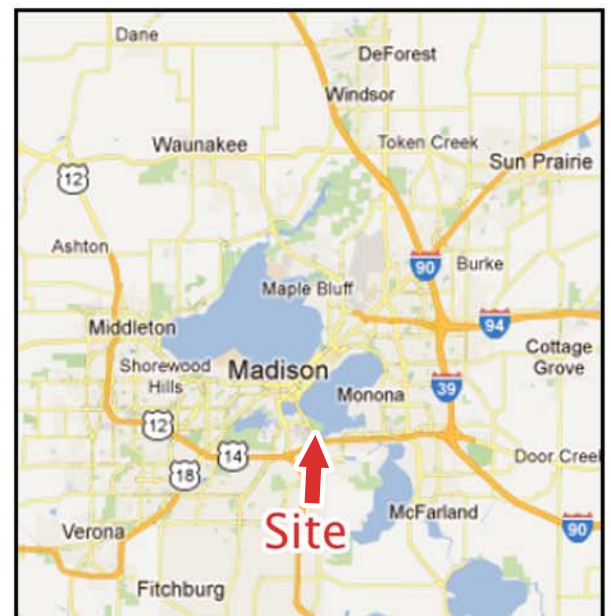


This five story mixed used development features 80 luxury apartments with a 5,000 square foot green rooftop terrace, 16,000 sf of commercial space, stunning views of Lake Monona and easy access to the Capital City Bike Trail and John Nolen Drive.



## Property Availability/Details

Building Size:	80 apartments & 16,000 sq. ft. of commercial.
Site Size:	1.80 acres
Underground Parking:	Yes
Vacancy (6/1/15):	Under Construction
Frontage:	John Nolen Drive
Property Type:	Mixed-Use
Parking:	80
Year Built:	Under Construction



**Contact Info:** Paul Molinaro  
Direct: (608) 661-8803  
Cell: (608) 628-5427  
paulm@buildtosuit.com

[www.buildtosuit.com](http://www.buildtosuit.com)

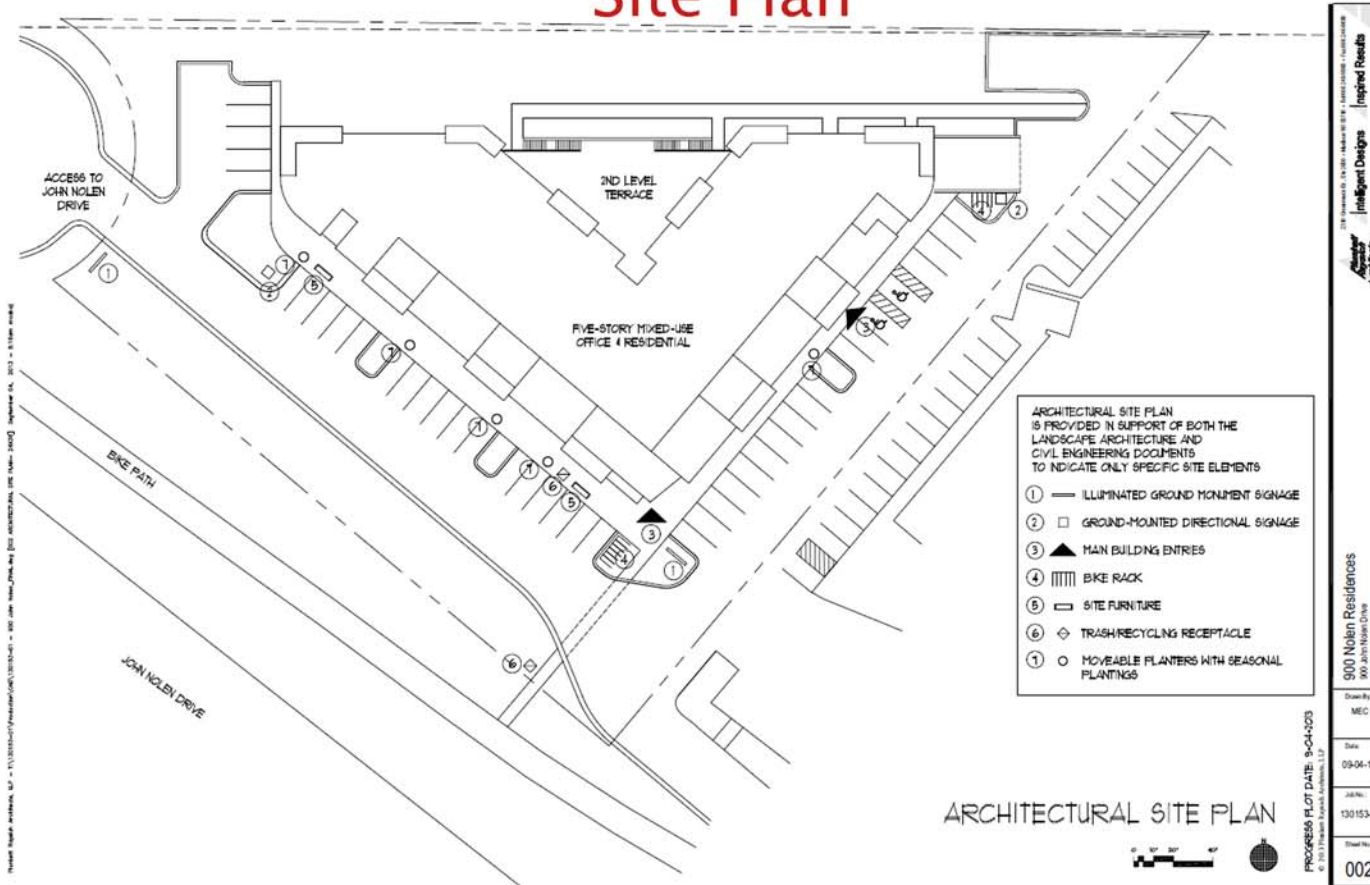
# Property Data Sheet

Watermark Lofts

960 John Nolen Drive, Madison, WI 53713



## Site Plan



### Contact Info:

Paul Molinaro  
Direct: (608) 661-8803  
Cell: (608) 628-5427  
paulm@buildtosuit.com

[www.buildtosuit.com](http://www.buildtosuit.com)

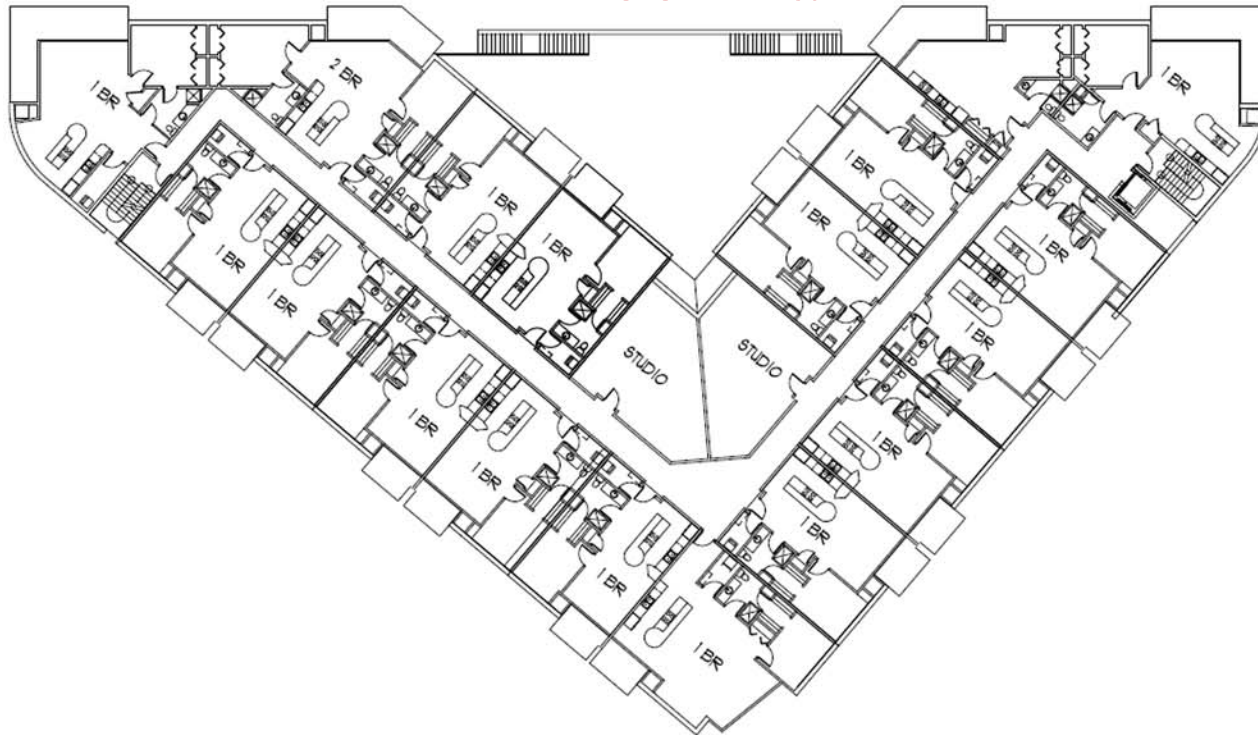
# Property Data Sheet

Watermark Lofts

960 John Nolen Drive, Madison, WI 53713



## Floor Plan



TYPICAL UPPER LEVEL FLOOR PLANS

---

### Contact Info:

Paul Molinaro  
Direct: (608) 661-8803  
Cell: (608) 628-5427  
paulm@buildtosuit.com

[www.buildtosuit.com](http://www.buildtosuit.com)