

# Property Data Sheet

8431-8443 Murphy Drive  
Middleton, WI 53562

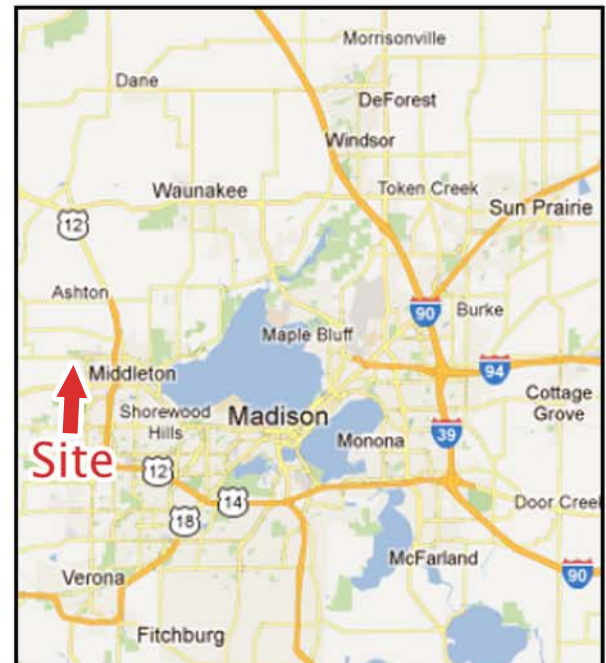


This fully leased, 18,000 sf single-tenant building features a pre-engineered metal building construction, a large amount of office build-out, 4 loading docks, an enclosed corridor connecting to the adjacent building and frontage on Highway 14.



## Property Availability/Details

Building Size:	18,000 sf
Site Size:	1.44 acres
Tenancy:	Single
Vacancy (6/1/15):	0%
Loading Docks:	4
Drive-In-Doors:	0
Ceiling Heights:	20'+
Office Space:	Yes (with mezzanine)
Sprinkler System:	Yes
Year Built:	1987



**Contact Info:** Paul Molinaro  
Direct: (608) 661-8803  
Cell: (608) 628-5427  
paulm@buildtosuit.com

[www.buildtosuit.com](http://www.buildtosuit.com)



# 8431-8443 Murphy Drive Submarket Aerial



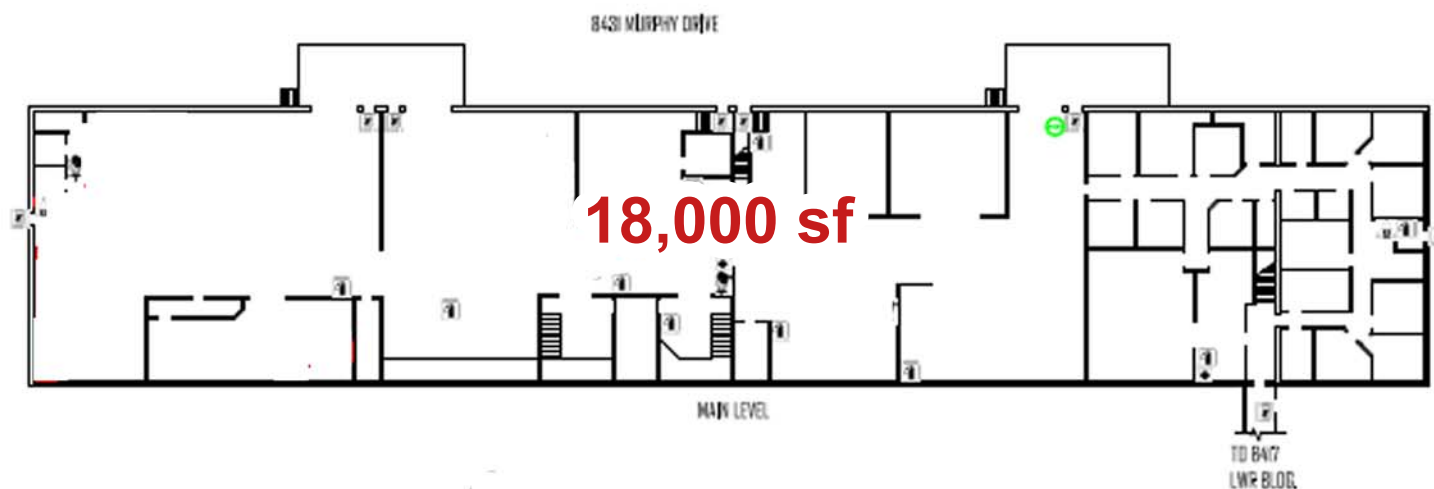
# Property Data Sheet

8431-8443 Murphy Drive  
Middleton, WI 53562



## Floor Plan

Highway 14/University Avenue



### Contact Info:

Paul Molinaro  
Direct: (608) 661-8803  
Cell: (608) 628-5427  
paulm@buildtosuit.com

[www.buildtosuit.com](http://www.buildtosuit.com)

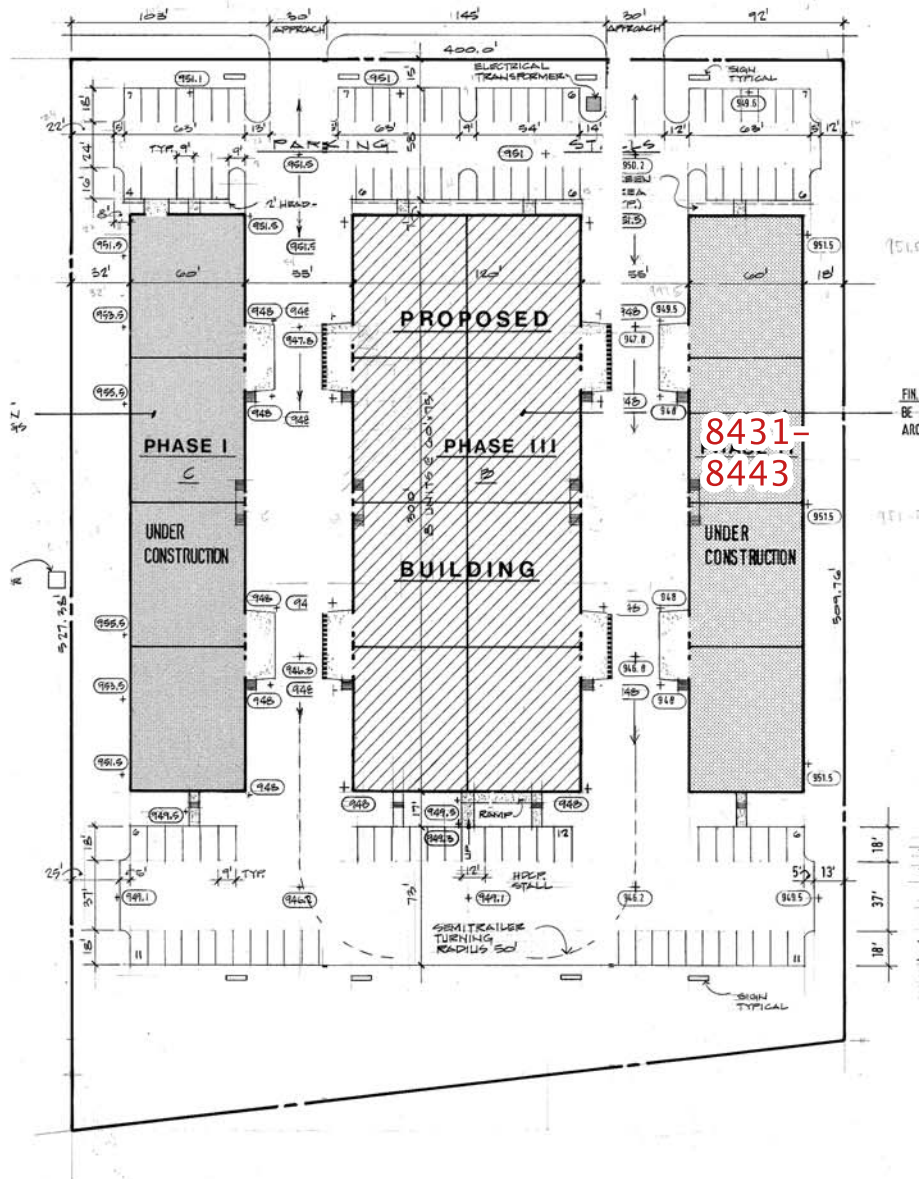


# Property Data Sheet

8431-8443 Murphy Drive  
Middleton, WI 53562



## Site Plan



### Contact Info:

Paul Molinaro  
Direct: (608) 661-8803  
Cell: (608) 628-5427  
paulm@buildtosuit.com

[www.buildtosuit.com](http://www.buildtosuit.com)