

Property Data Sheet

320 E Wilson Street
Madison, WI 53703

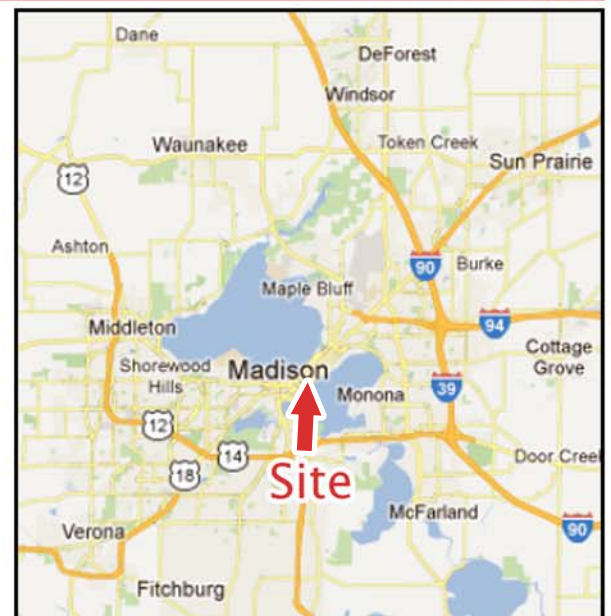


This new six story mixed used development features 30 market rate apartments with a rooftop terrace, 1,851 sf of commercial space, a great downtown location, views of Lake Monona and easy access to the Capital City Bike Trail.



Property Availability/Details

Building Size:	30 apartments & 1,851 sq. ft. of commercial.
Site Size:	6,325 sq. ft.
Vacancy (6/1/15):	Under Construction
Frontage:	East Wilson Street
Property Type:	Mixed-Use
Year Built:	Under Construction



Contact Info: Paul Molinaro
Direct: (608) 661-8803
Cell: (608) 628-5427
paulm@buildtosuit.com

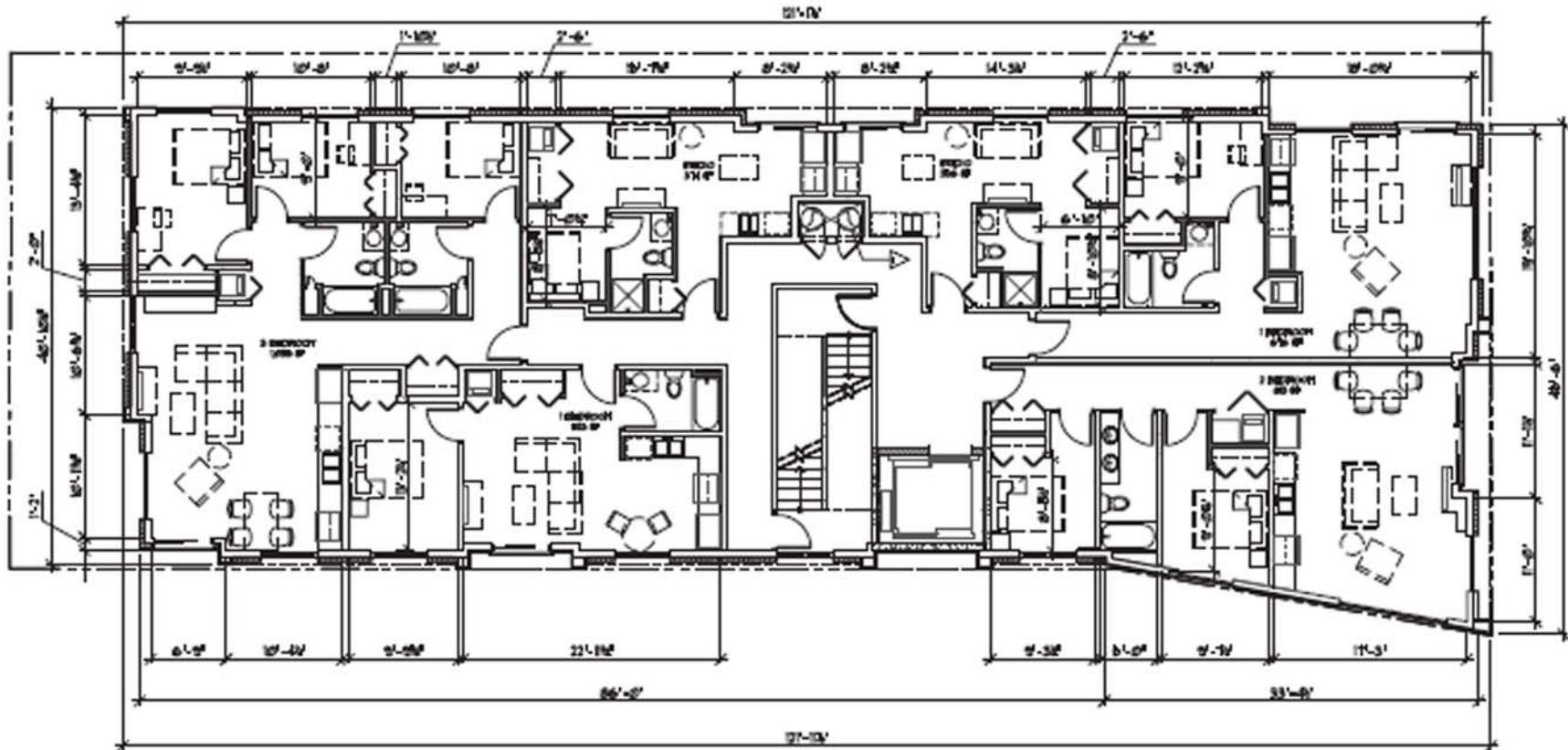
www.buildtosuit.com

Property Data Sheet

320 E Wilson Street
Madison, WI 53703



Floor Plan (floors 2-6)



Contact Info:

Paul Molinaro
Direct: (608) 661-8803
Cell: (608) 628-5427
paulm@buildtosuit.com

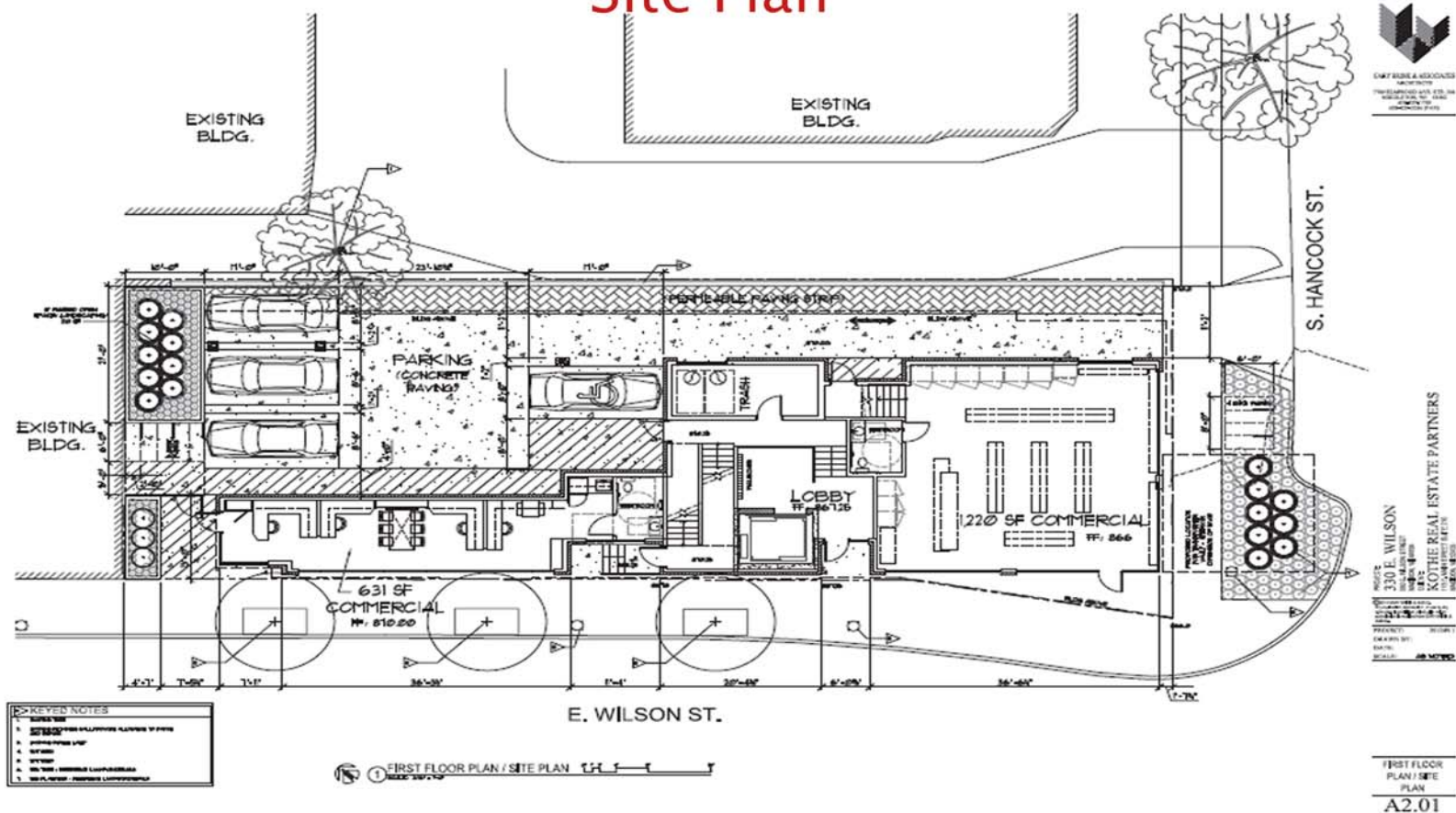
www.buildtosuit.com

Property Data Sheet

320 E Wilson Street
Madison, WI 53703



Site Plan



Contact Info:

Paul Molinaro
Direct: (608) 661-8803
Cell: (608) 628-5427
paulm@buildtosuit.com

www.buildtosuit.com